

How can I perform a manual installation of the drivers for my Thrustmaster game controller?

With the majority of computer peripherals available today using the USB connections protocol, it may happen that the installation of a new accessory might cause problem. On some occasion, Windows will get confused and will install generic drivers instead of the ones specifically designed for the devices.

At this point, a manual installation might be necessary to install your device correctly

- Go to **Start / Settings /Control Panel**.
- Double-click the **System** applet to bring up the **System Properties** dialog.
- Click on the **Device Manager** tab.

In the list of device types, there should be an entry called "Human Interface Devices". Click the + sign to expand the entry.

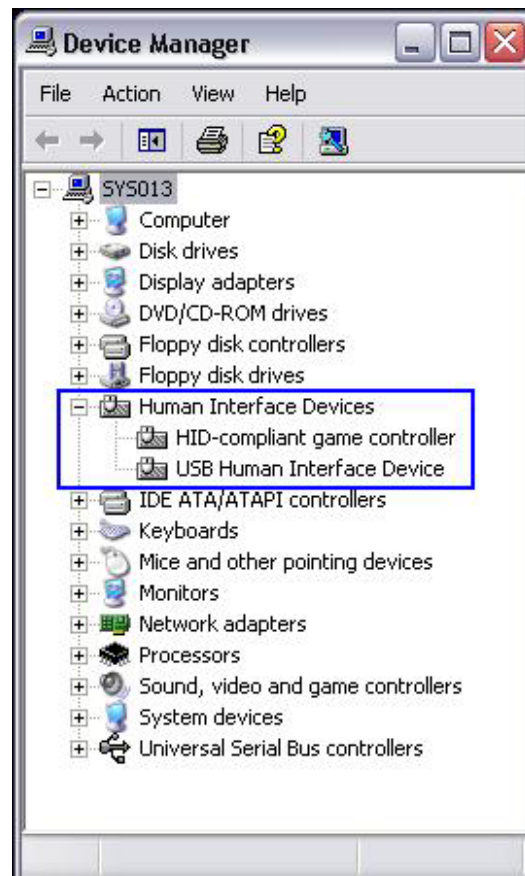
If you have additional Human Interface Devices connected to your system other than your Thrustmaster Game controller device, you will see them listed here.

NOTE:

This procedure assumes that there are no other Human Interface Devices connected to your system, and that the drivers for your Thrustmaster game controller are still installed on your computer.

- Two entries should be visible under the "Human Interface Devices"

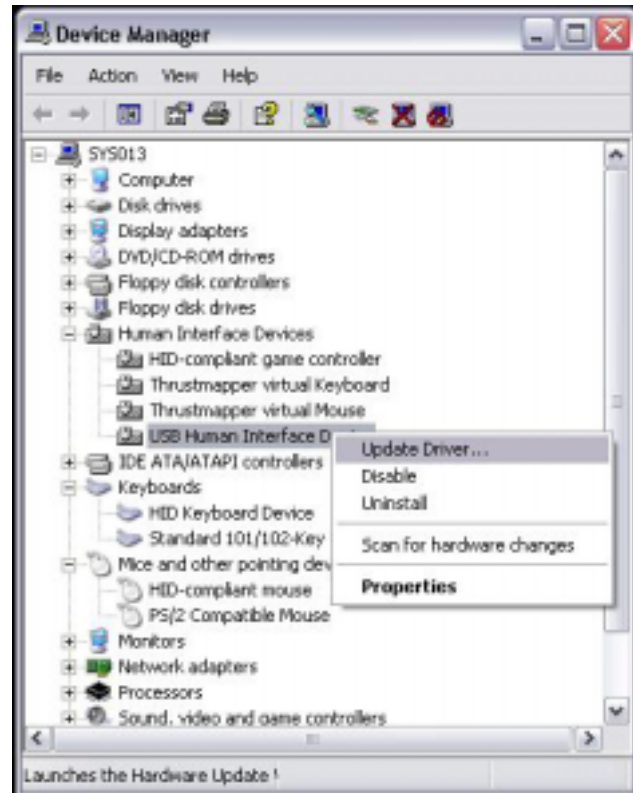
- **USB Human Interface device**
- **HID-Compliant game controller**



- Select the **HID-Compliant game controller** entry. Right-click and select **Properties**

- A new window titled "**HID-Compliant game controller Properties**" will appear.

- Select the **Driver** tab, and click the **Update Driver** button.



- A new window titled "**Hardware Update Wizard**" will appear. Select the "**Install from a specific location (Advanced)**" and click Next.



- Select the "**Search for the best driver in these location**". Make sure the checkbox "**Include this location in the search**" is checked, and enter the path where the driver files are located (by default: c:\program files\Thrustmaster). Click Next.



- Once Windows has finished searching for your device drivers, you should see the name of your device

- Click Next for Windows to install the correct driver for your Thrustmaster game controller.

Once Windows has completed updating the driver, click Finish.

You will need to repeat the procedure for the remaining **USB Human Interface device**, unless Windows does it automatically.

