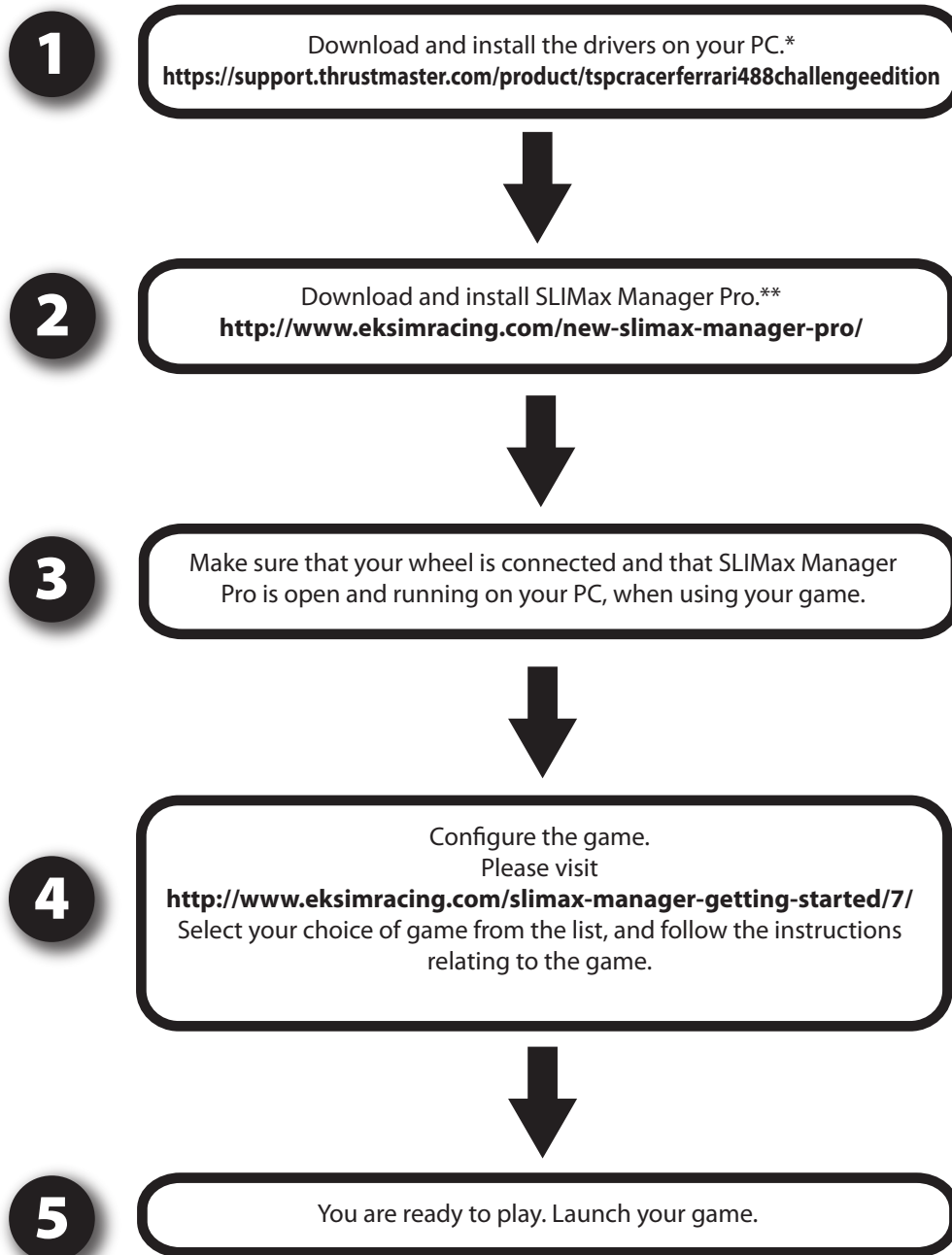


# TS-PC RACER

Ferrari 488 Challenge Edition

## Procedure for using LEDs in games with SLIMax Manager Pro



\* For more information, please refer to the INSTALLATION ON PC section in the user manual for your TS-PC RACER Ferrari 488 Challenge Edition racing wheel.

\*\* The SLIMax Manager Pro getting started guide is available here: <http://www.eksimracing.com/getting-started-with-thrustmaster-and-slimax-mgr-pro/>  
A video tutorial is available here: <http://www.eksimracing.com/slimax-manager-getting-started/5/>