

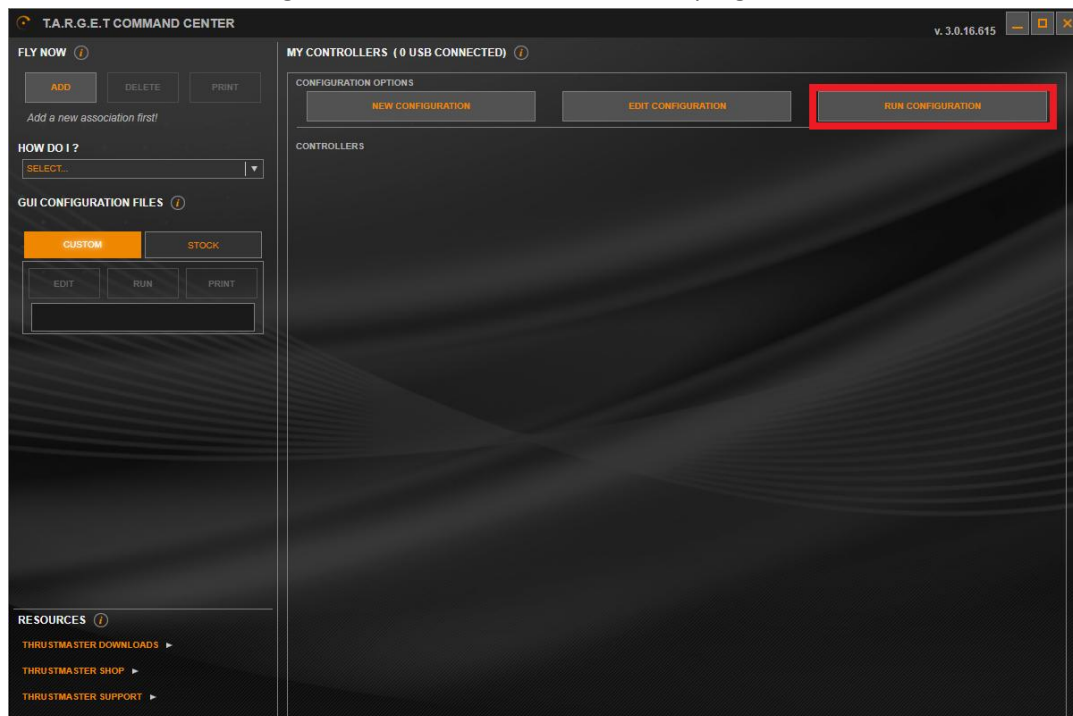
HOW TO LOAD THE TARGET PROFILE FOR STAR CITIZEN ...

First, if not done already, install T.A.R.G.E.T, then reboot your computer.

<https://support.thrustmaster.com/sol-r-2-hosas>

Once done :

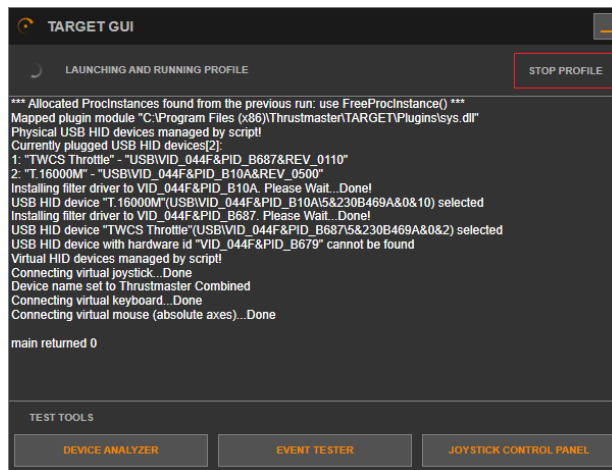
1. Copy the file "[layout_SOL-R_2_HOSAS_Suggest_Mapping.xml](#)" to « *C:\Program Files\Roberts Space Industries\StarCitizen\LIVE\user\client\0\controls\mappings* »
2. Plug your SOL-R RIGHT-handed & SOL-R LEFT-handed to your computer.
3. Launch « TARGET GUI » (desktop icon, start menu or go to : "*C:\Program Files (x86)\Thrustmaster\TARGET\x64\TARGETGUI.exe*")
4. Clic on the « Run configuration » button located in the top right corner of the interface.



5. Browse to the profile you want to load, in our case «[Sol_R_2_HOSAS_StarCitizen.tmc](#)» and double-click it, it will then run the profile.

Note : *running a profile for the first time can take some time.*

- Once you see this, you can launch « Star Citizen » software, **but do not stop the profile or exit T.A.R.G.E.T.**



Note : Once you stop playing and after exiting « Star Citizen » you can click on the « stop profile » button and exit T.A.R.G.E.T.

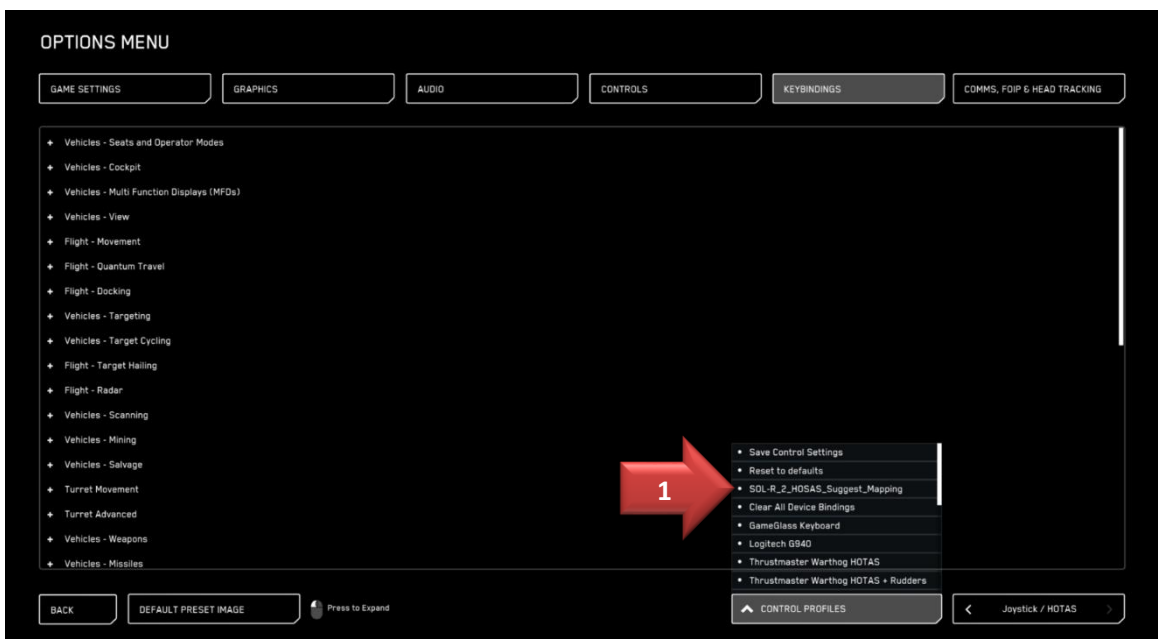
- In the main screen, select « OPTIONS » then « KEYBINDINGS ».



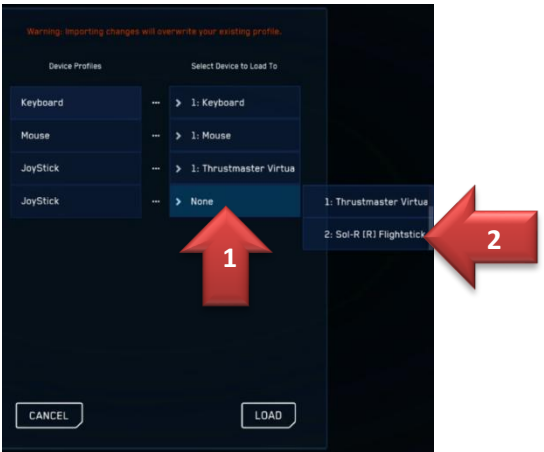
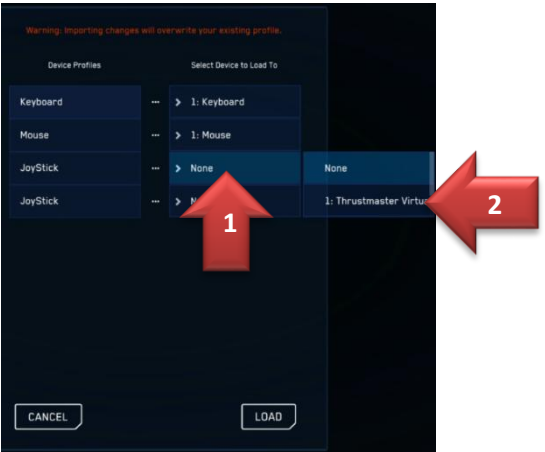
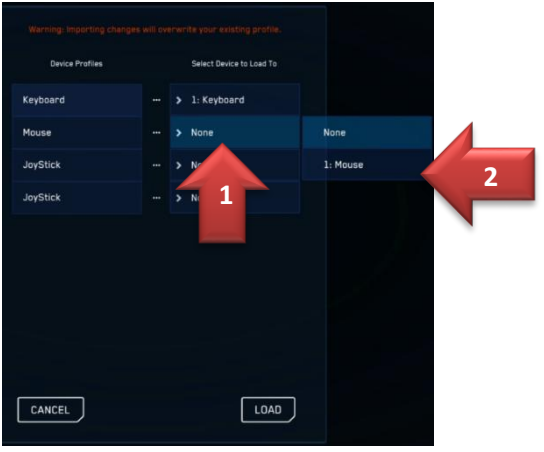
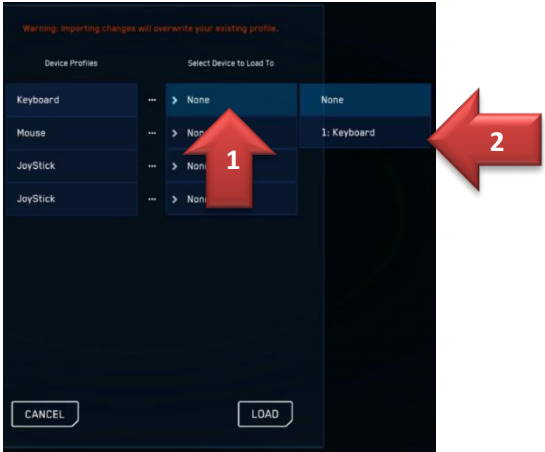
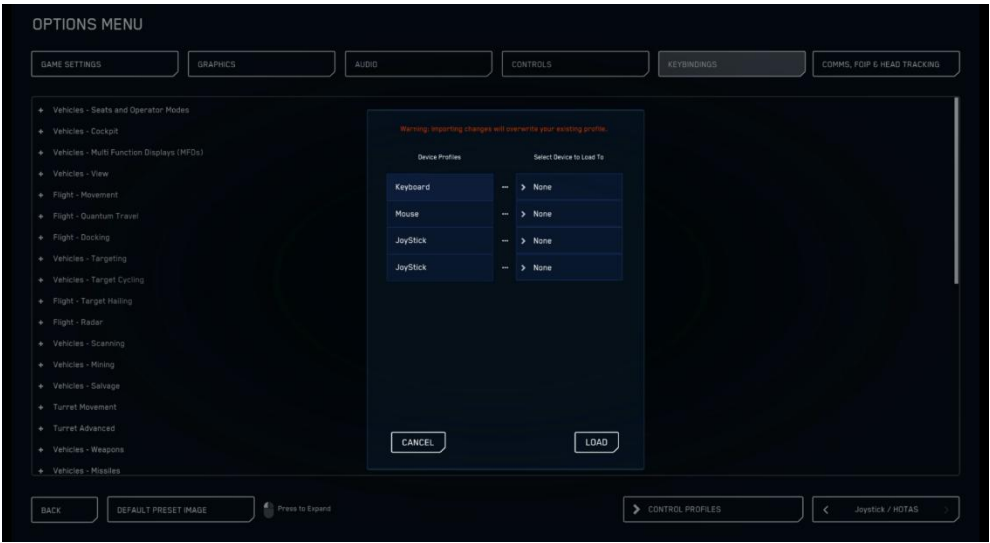
8. Select “Joystick / HOTAS”, then click on “ADVANCED CONTROLS CUSTOMIZATION”



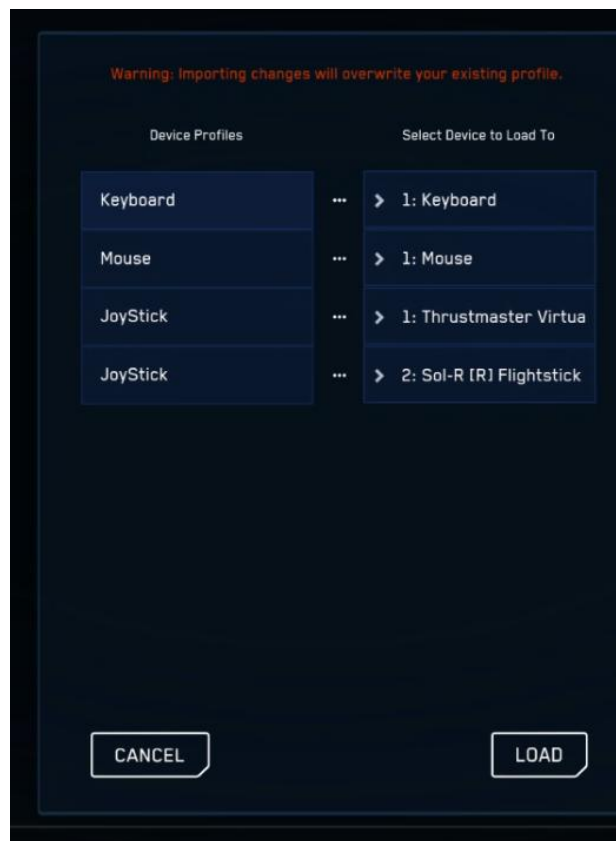
9. In the “ADVANCED CONTROLS CUSTOMIZATION” screen, select « **SOL-R_2_HOSAS_Suggest_Mapping** » in the dropdown.



10. Then a pop-up appears with Device Profiles we want to load on Device. Click on each Device Profiles (Keyboard / Mouse / JoyStick...) to load the profile on corresponding device.



11. After each Devices was selected, click “LOAD”



You are all set to discover the universe. Good luck citizen !