

HOW TO LOAD THE TARGET PROFILE FOR IL-2 BATTLE OF STALINGRAD...

Note, this profile is a “generic” solution to control all planes. Some planes have unique controls, this explain some of the function mapped will work on some plane and not on the others.

First, if not already done, install T.A.R.G.E.T then reboot the computer.

Once done:

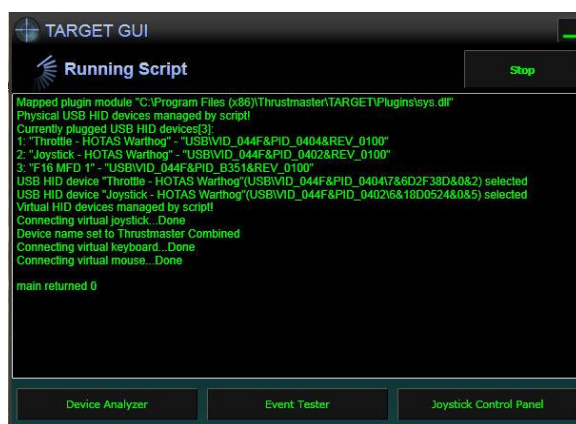
- 1) Launch “TARGET GUI” (use the start menu, or Icon, else, go to : "C:\Program Files (x86)\Thrustmaster\TARGET\x64\TARGETGUI.exe")
- 2) Mouse clic on “Run configuration” button in the top right corner of the interface.



- 3) An explorer window will open. Navigate and point the profile file you want to run. For example: “IL2 BOS T-16000M.fcf” and double click it. It will run the profile.

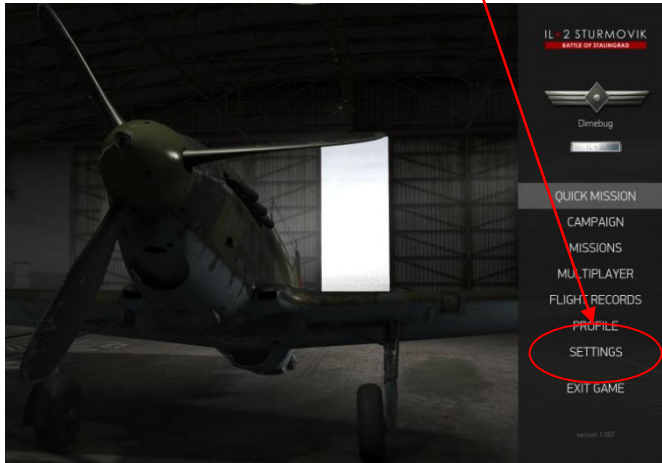
Note: running a profile for the first time on a computer can take some times.

- 4) Once you see this, you can launch “IL-2 Battle Of Stalingrad” software **but do not stop the profile or exit T.A.R.G.E.T.**

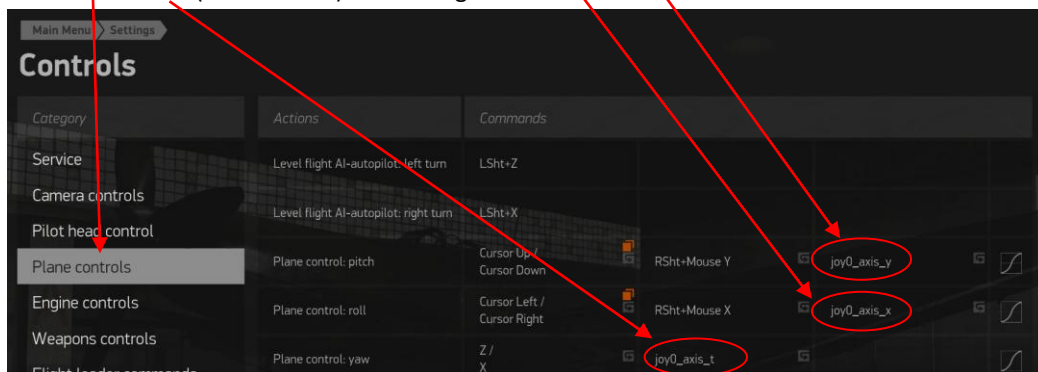


NOTE : Once finished playing and after exiting “IL-2 Battle Of Stalingrad” you can click on the “stop” button on the top right corner of the “TARGET GUI running script” Window. Then quit T.A.R.G.E.T.

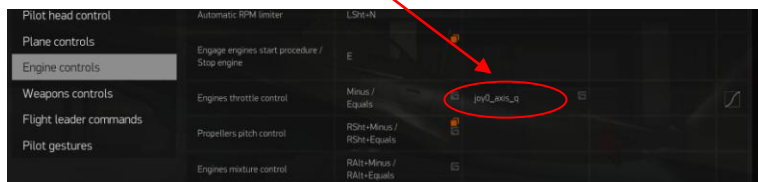
- 5) Launch IL-2 Battle Of Stalingrad
- 6) In the main screen, in clic on “Settings”, then select “controls”



- Select “Plane controls” and map : joystick X and Y axes and the Yaw axis using Right throttle minustick (slew control) left and right axis.



- 7) Select « Engine Controls”
Map the throttle to “Engine Throttle Control”



NOW ENJOY THE GAME! AND GOODLUCK PILOT!