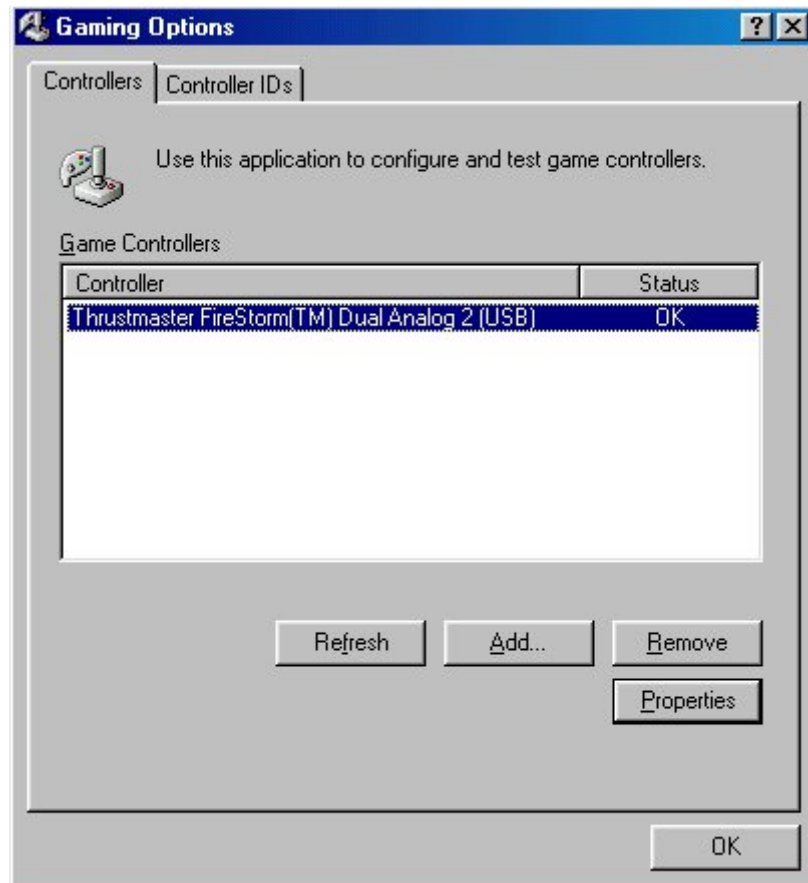


Why is my Firestorm Dual Analog 3 Gamepad (or my Firestorm Dual Power 3) recognized by Windows with the name Firestorm Dual Analog 2 (or Firestorm Dual Power 2)?

It is normal that your Firestorm Dual Analog 3 Gamepad (or your Firestorm Dual Power 3) should be recognized by Windows with the name Firestorm Dual Analog 2 (or Firestorm Dual Power 2).

If you see the name of your controller appear in **Control Panel/Game Controllers** (or **Gaming Options**) with **OK** status, then your Dual Analog 3 (or Dual Power 3) has been correctly installed.



You can click the **Properties** button to test out your gamepad functions.

Next, make sure that your game supports game peripherals. To do this, please refer to your game's manual or contact the game publisher's technical support service. Please note that some games have been developed to only function with a keyboard and/or mouse; in this case, you will not be able to use your Thrustmaster accessory. Games, which do not support accessories such as gamepad, are often those developed for children, as well as strategy, role-playing and shooter or FPS (Quake-like) games.

Once you have verified that your game supports gamepad, load up the game. Before you start playing, enable and set up your accessory via the game's options. Please refer to your game's manual for instructions on how to do this.