

How can I know if the Thrustmapper software is properly installed on my computer?

The installation process should go as follow:

1-Run the installation package and follows the instructions. You will be asked to reboot your computer.

If the installer detects a previous version still installed, it will remove it and reboot the computer. You will be required to run the installer again to proceed with the installation.

NOTE:

Under Windows 2000/ XP, you must have Administrative Rights in order to proceed with the installation

For information on configuring users rights, please consult your Windows manual or contact Microsoft®.

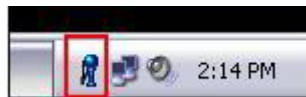
2- Upon reboot, Windows will detect and install 2 devices:

"Thrustmaster Virtual Mouse"

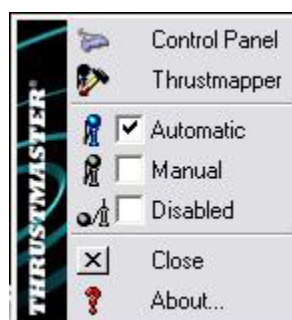
"Thrustmaster Virtual Keyboard"

These are necessary for the Thrustmapper to recognize you accessory properly. If they are not detected, please reboot again. If this does not work, please re-launch the installation process.

Once the installation is complete, the first sign that the **Thrustmapper** was installed successfully will be the appearance of the **Thrustmapper Taskbar Utility** in Windows Task Manager



The **Taskbar utility** gives you access to all the Thrustmapper options as well as Windows Game Controller. Right-click the icon to get the following menu:



The second way to verify that the **Thrustmapper** was installed correctly is to look in **Windows Device Manager**.

It can be accessed through Windows **Control Panel**:

Start/ Control Panel/ System, which will bring up this window:



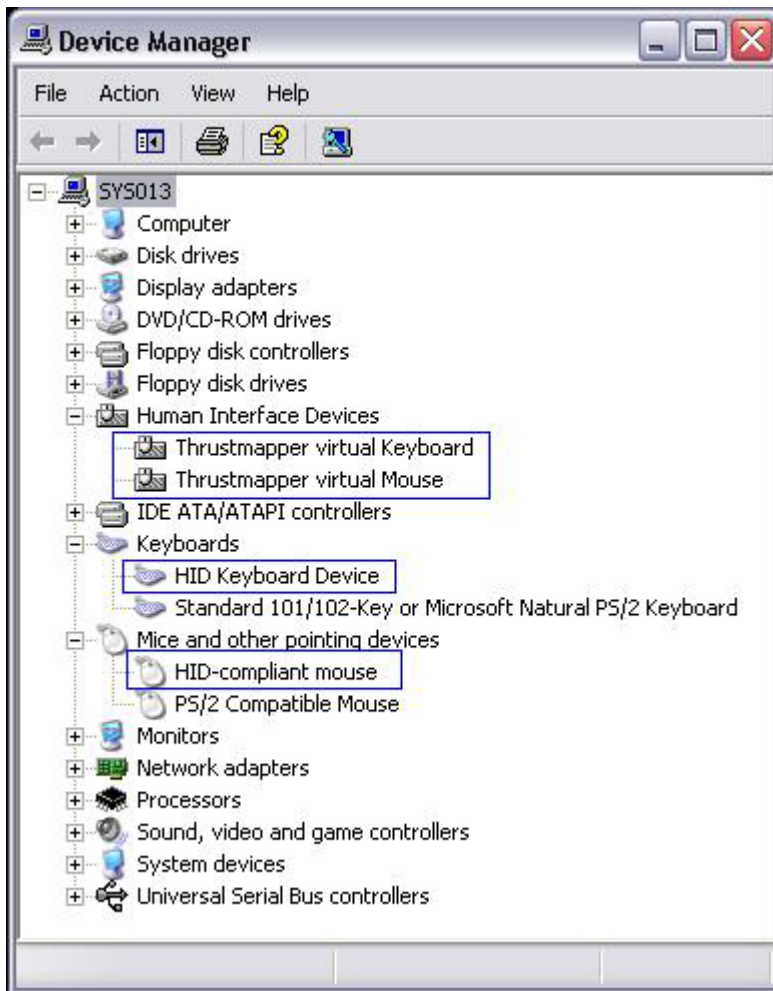
Then select the **Hardware** tab, and click on **Device Manager**.

Once open, expand (click the + sign) the following sections:

- **HUMAN INTERFACE DEVICE**
- **KEYBOARD**
- **MOUSE**

If the Thrustmapper software is installed properly, the sections should look similar to the picture below

NOTE: If other USB accessories (mouse, keyboard) are connected to the computer, it's possible that more components be present under each section.



The following are required to be present:

HUMAN INTERFACE DEVICE

- Thrustmaster Virtual Keyboard
- Thrustmaster Virtual Mouse

KEYBOARD

- HID-Keyboard Device

MOUSE

- HID-Compliant Mouse