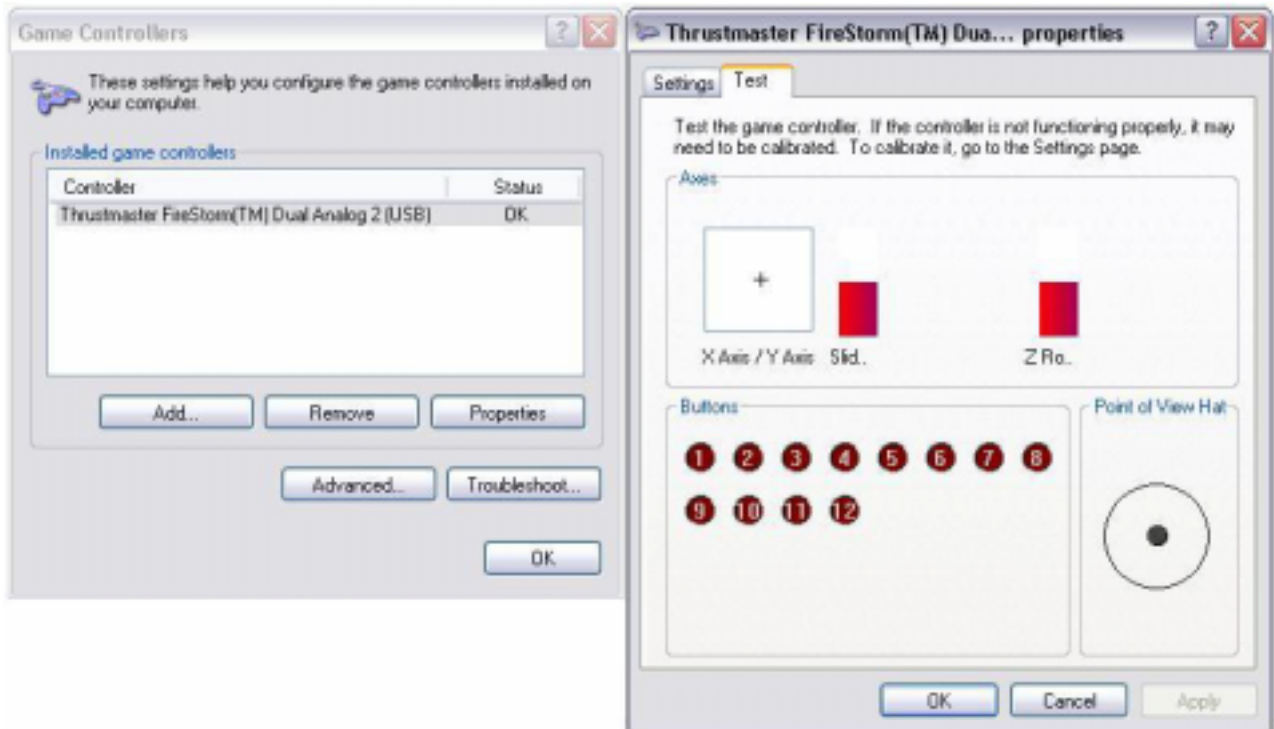


How do I know if my Thrustmaster game controller is installed properly?

Your controller, be it a gamepad, a joystick or a wheel, is fully compliant with the **Human Interface Device** specifications, and was developed in such a way that it will be recognized under the Microsoft Operating systems (Windows 98 SE, Me, 2000 and Windows XP) as a "**HID compliant Game Device**".

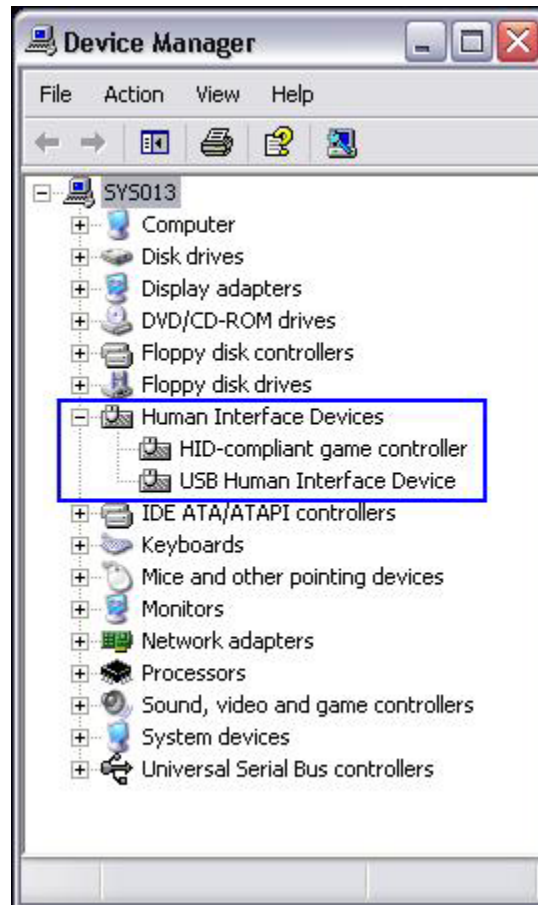
The drivers provided by Microsoft will ensure you a perfect compatibility with any games using DirectX technology (100% of today's games!).

What this means is that as soon as you connect you game controller to your computer, it will automatically be recognized by Windows, and made available in Windows **Game Controller**, allowing you to perform test and calibration:



In Device Manager, your device will appear as two components:

- **USB Human Interface device**
- **HID-Compliant game controller**



Note that many other components may also appear if other USB accessories are connected to the computer (keyboard, mouse, etc).