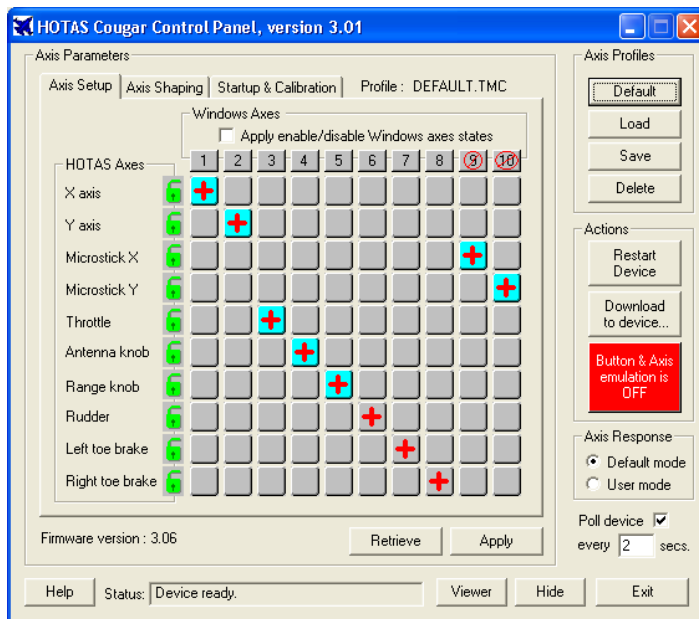


Brief description of the HOTAS Cougar Control Panel

Axis Setup tab:



Axis Parameters:

Let the user define the axes of the Cougar.

Axis Profiles:

Let the user save, load, delete or simply put back to default the axes defined in Axis Parameters.

Actions:

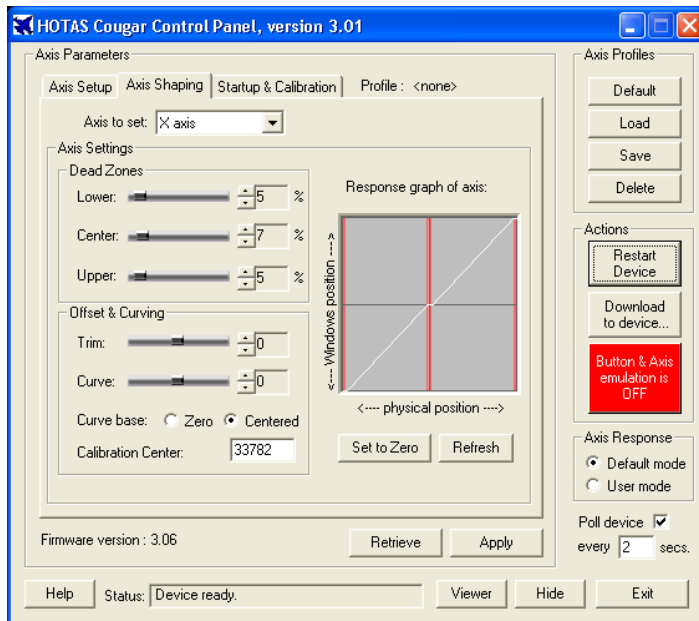
Restart Device: Same action as disconnecting and reconnecting the Cougar from the USB.

Download to device:

Let the user download an already created Joystick profile without having to launch Foxy.

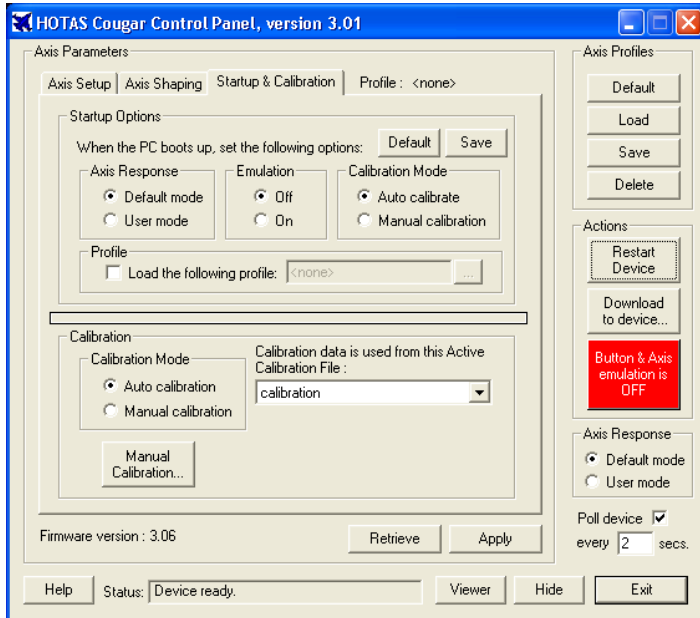
Button & Axis Emulation OFF/ON: Enable/Disable an already downloaded joystick profile, if the emulation is off the profile will not be usable even if it is already loaded in the device.

Axis Shaping tab:



- Axis shaping let the user define DeadZones, Offsets & Curving for any of the Cougar axes.
- Buttons and Axis Emulation will not affect the Axis shaping.
- These settings are stored in the Axis profile (TMC) file.

Startup & Calibration tab:



- In this section you can set your Cougar from Windows Startup, manually calibrate & make multiple manual calibration profiles.